

Regione Siciliana  Provincia di Messina 

Comune di Barcellona Pozzo di Gotto

TAVOLA

A.3d2

scala 1:2.000
Marzo 2012

PROGETTISTA
Prof. Arch. Giuseppe Gangemi

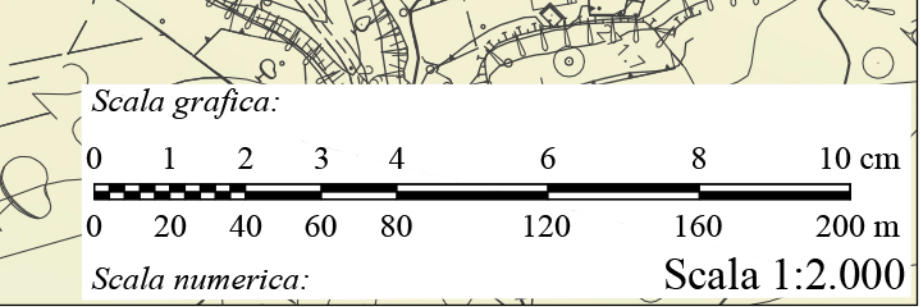
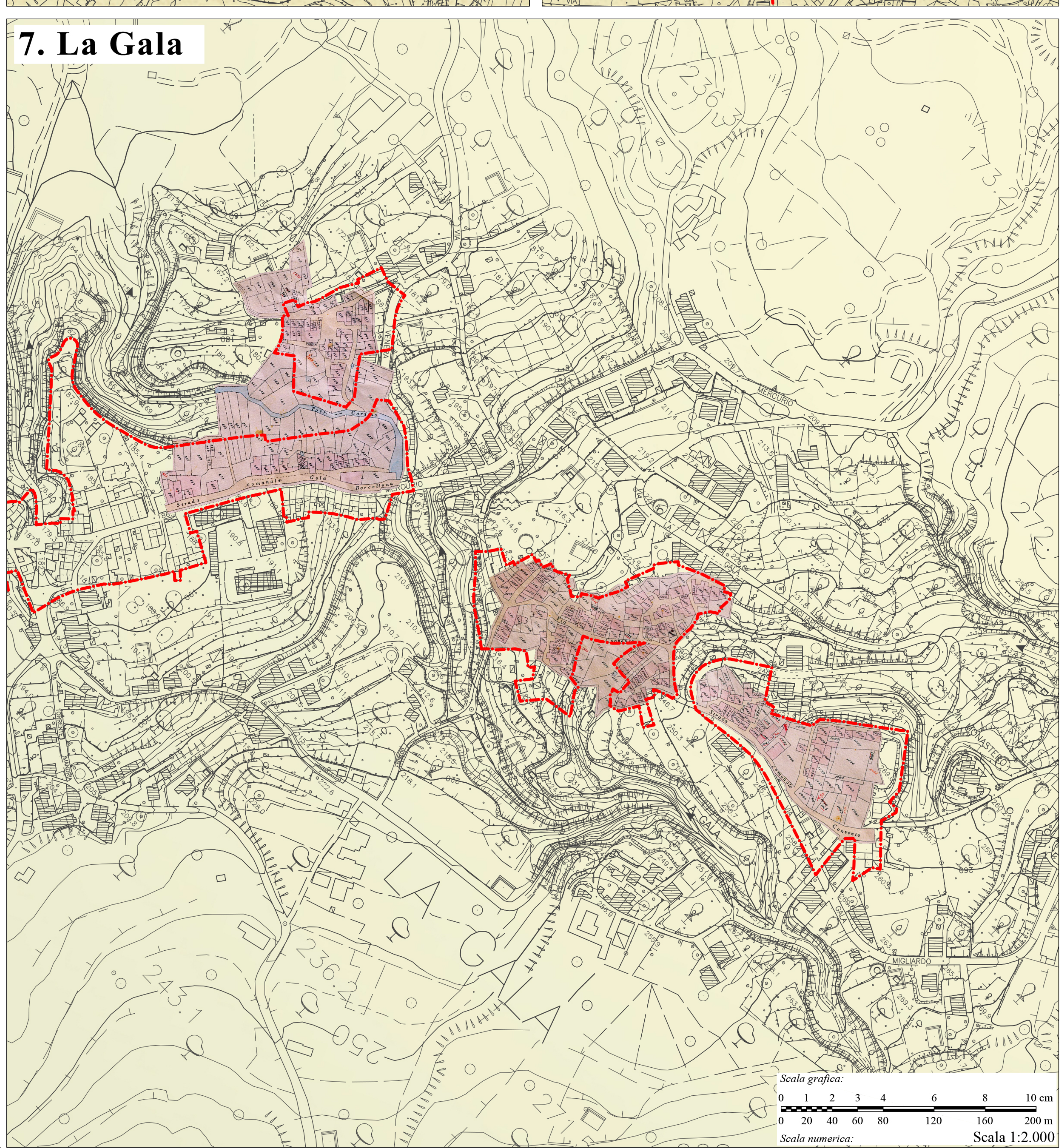
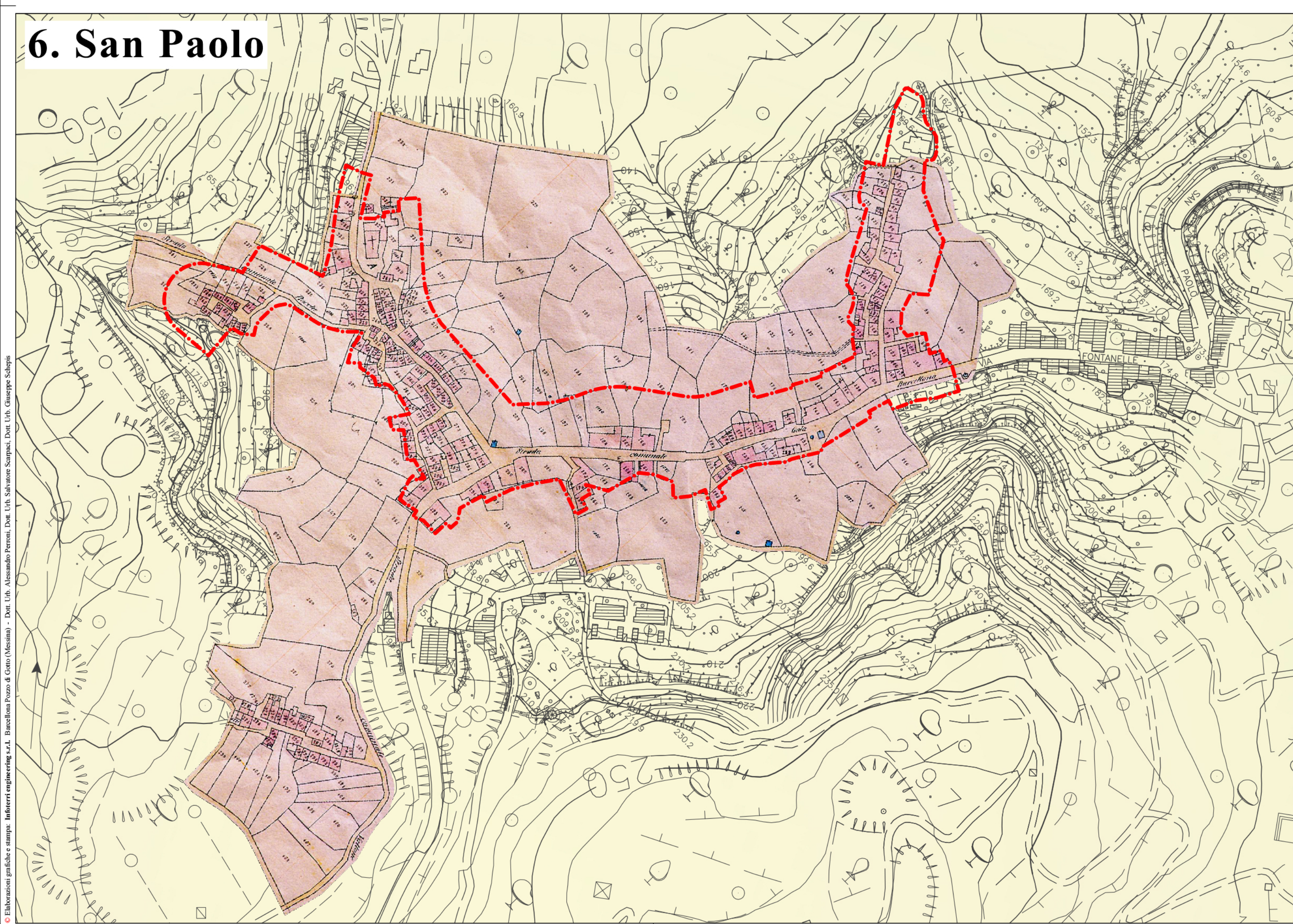
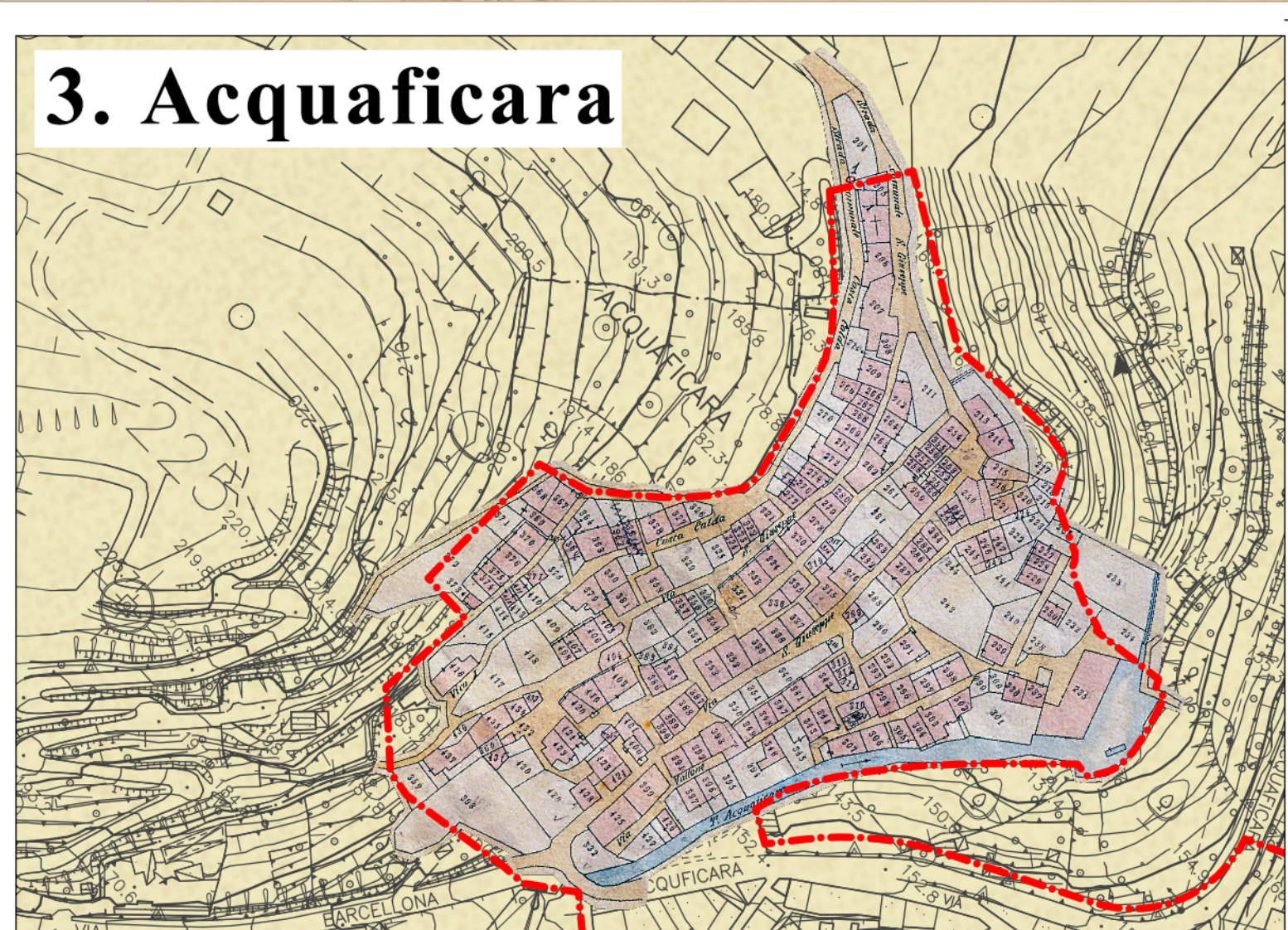
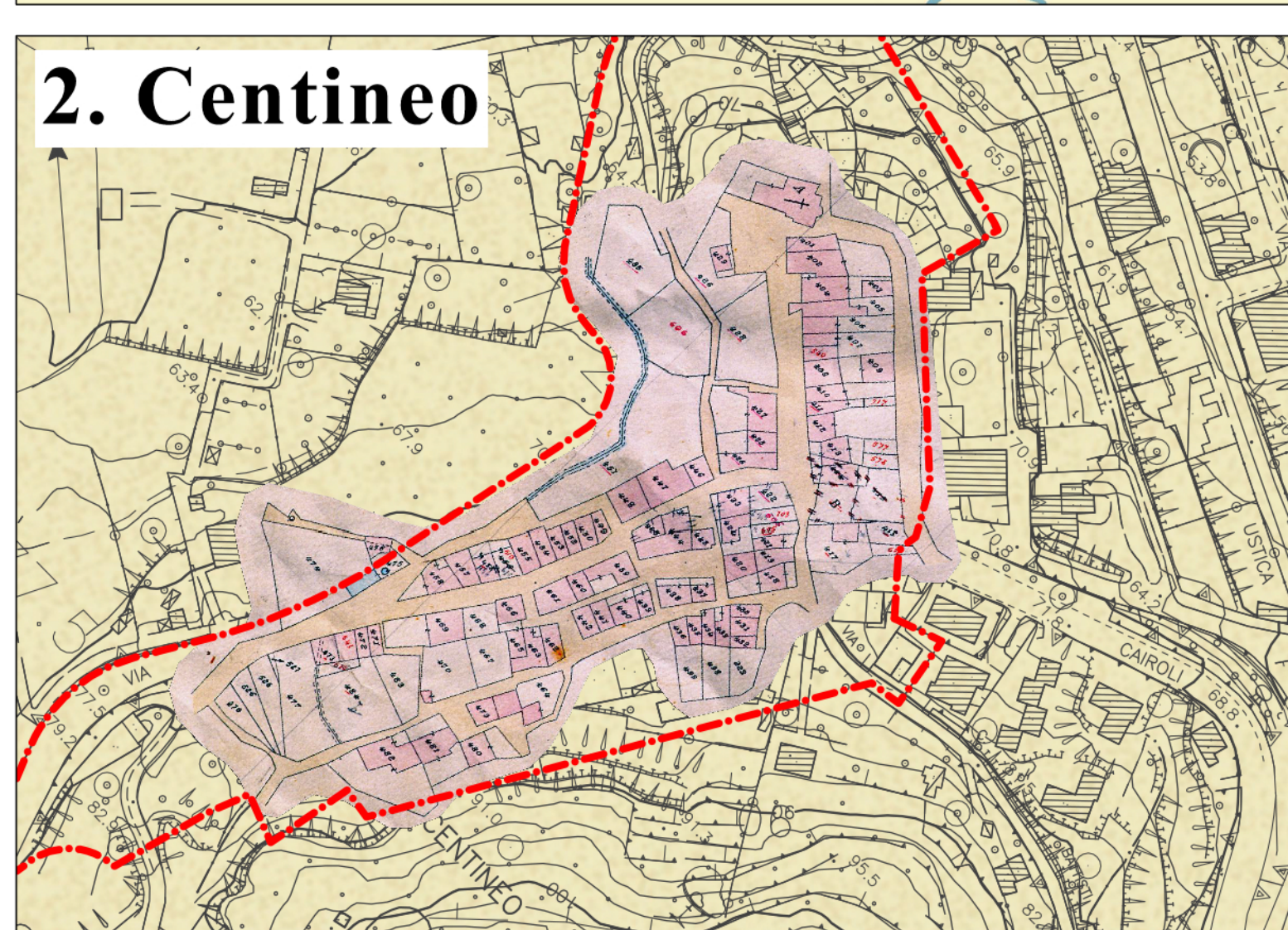
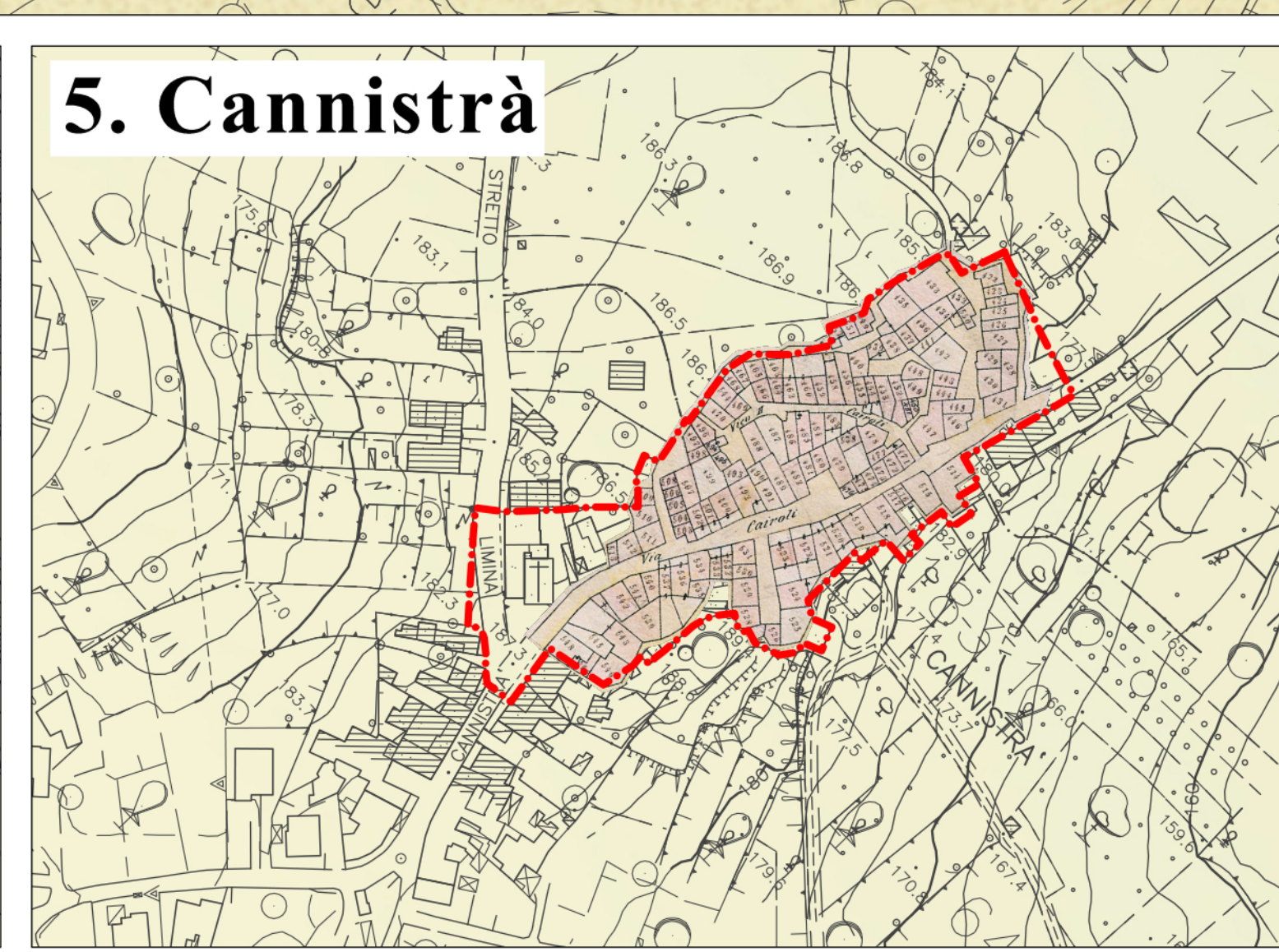
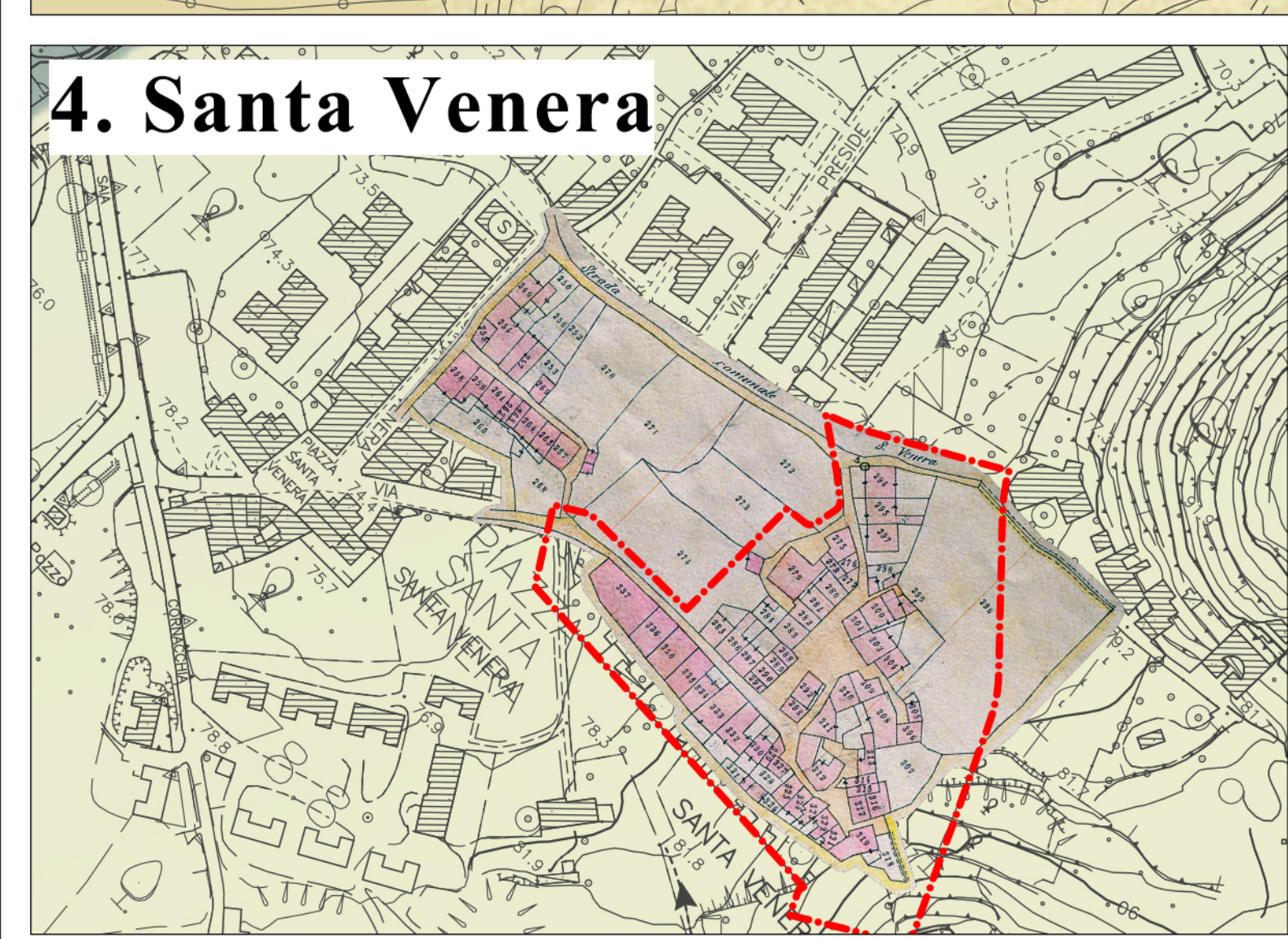
COLLABORAZIONE
Arch. Santino Nastasi, Arch. Giovanni Cattafi, Arch. Mario Nastasi

PIANO REGOLATORE GENERALE
Interventi di recupero in zona A Circolare A.R.T.A. - D.R.U. n° 3/2000

Sviluppo storico dell'insediamento
Catastali storici georeferenziati



Siracusa catastale 1878



Elaborazione grafica e stampa: **Architettura e Urbanistica** - Dott. U.S. Santino Nastasi, Dott. U.S. Giuseppe Gangemi, Dott. U.S. Giovanni Cattafi, Dott. U.S. Mario Nastasi